


# USER GUIDE EXPLOSION-PROOF TELEPHONES

ATEX – GASES

TYPE 229  II 2 G



COMMUNICATING IN SAFETY

## CONTENTS

### **1. USER INSTRUCTIONS/SET-UP USAGE/MAINTENANCE INSTRUCTION**

### **2. PRESENTATION**

#### **2.1 CONTENTS OF PACKAGE**

#### **2.2 GENERAL PRESENTATION OF SERIES 229 TELEPHONES**

#### **2.3 GENERAL FEATURES**

#### **2.4 TYPE OF CABLE**

### **3. DIMENSIONS OF TELEPHONE SET**

#### **3.1 OPENING THE TELEPHONE**

#### **3.2 FIXING AND SEALING OF SET**

#### **3.3 CONNECTION OF THE TELEPHONE LINE**

#### **3.4 EARTHING THE TELEPHONE**

### **4. PRESENTATION OF SERIES 229 TELEPHONES**

### **DECLARATION OF CONFORMITY**

### **EC-TYPE EXAMINATION CERTIFICATE**

**THIS GUIDE TRAINING MUST BE READ IN ITS ENTIRETY  
AND TOGETHER WITH THE USER GUIDE AND PROGRAMMING**


**SAVE THESE GUIDES THEY WILL BE USEFUL  
ESPECIALLY IN THE CASE OF RE-SCHEDULING OF POST**

## EXPLOSIONPROOF TELEPHONES 229 TYPE

### EQUIPMENT FOR INDUSTRIAL SITES - EXPLOSIONPROOF TELEPHONES SERIES 229

#### MARKING

The marking indicates following particulars :

• Marking	:	CE0080
• Designation of type	:	229A1
• Year of construction	:	200-
• Specific marking	:	 II 2 G
• Complementary marking	:	Ex e ib mb IIC T5
• Certificat of conformity	:	INERIS 09ATEX0074
• Ambient temperature of use	:	Tamb. = -40°C à +60°C
• Voltage and current of use	:	see special conditions page 5

#### NOTE

THIS PRODUCT CONFORMS TO WEATHERPROOF PROTECTION  
CLASSIFICATION IP54

#### CAUTION!

EACH AND EVERY COMPONENT PART IS INTEGRAL TO THE METHOD  
OF PROTECTION AND CANNOT BE MODIFIED IN ANY WAY WHATSOEVER,  
INCLUDING THE CABLE ENTRIES.

THE GUARANTEE ONLY APPLIES WHERE THE PRODUCT IS INSTALLED AND OPERATED STRICTLY IN ACCORDANCE  
WITH INSTRUCTIONS AS DEFINED IN THIS MANUAL

NO GUARANTEE CAN BE INVOKED IN THE EVENT OF A DETERIORATION RESULTING FROM EXTERNAL FACTORS  
OR DUE TO LACK OF ADHERENCE TO USER INSTRUCTIONS

IN THE DESIRE FOR CONSTANT IMPROVEMENT, THE INFORMATION CONTAINED IN THIS DOCUMENT AND THE  
CHARACTERISTICS OF THE EQUIPMENT MAY BE SUBJECT TO MODIFICATIONS WITHOUT PRIOR NOTICE

#### EUROPEAN STANDARDS

UNITS BEARING THE CODE "CE" CONFORM TO EMC DIRECTIVE (89/336/CEE)  
AND THE DIRECTIVE RELATING TO LOW VOLTAGES(73/23/EEC)  
FORMULATED BY THE EUROPEAN COMMUNITY

UNITS BEARING THE CODE "E X" CONFORM TO ATEX DIRECTIVE (94/9CE)  
AND CONFORM TO EUROPEAN STANDARDS  
FOR CATÉGORIE IIG

EN 60 079-0 - 2006, EN 60 079-7 - 2007, EN 60 011 - 2007, EN 60 079-18 – 2004 / AC : 2006

## **1 USER INSTRUCTION FOR EXPLOSION-PROOF TELEPHONE TYPE 229**


### **IMPORTANT**

**THE FIRST CUT OVER INTO SERVICE SHOULD BE CARRIED OUT BY ENGINEERS WITH ADEQUATE AND APPROPRIATE TRAINING IN RESPECT OF HAZARDOUS AREAS.**

**ANY REPAIR OR MODIFICATION OF THE UNIT BY THE USER IS NOT ALLOWED WITHOUT A FORMAL MANUFACTURER AGREEMENT.**

### **MARKING IN ACCORDANCE WITH ATEX DIRECTIVE 94/9/CE**

Marking comprise the following indication :

- Address : **LE LAS**
- Marking : **CE0080**
- Type designation : **229A1G (gas)**
- Year of construction : **200-**
- Specific marking : ** II2G (gas)**
- Complementary marking : **Ex e ib mb IIC T5 for categorie II2G**
- Certificat of conformity : **INERIS 09ATEX0074**
- Specification : **NE PAS OUVRIR SOUS TENSION  
DO NOT OPEN WHILE ENERGIZED**
- Ambient temperature of use : **Tamb. = -40°C to +60°C**
- Electrical Characteristic : **Umax.= 60Vcc – Imax. = 80Ma. – Pmax. 1.2W**
- Product reference
- Serial number

Compliance with the essential safety requirements defined in Annex II to Directive 94/9/EC of March 23, 1994, is obtained by the equipment conforms to standards :

For gas :

- EN 60079-0 de Octobre 2006
- EN 60079-7 de Mars 2007
- EN 60079-11 de Mars 2007
- EN 60079-18 de Juillet 2004 / AC :2006



## **2 PRESENTATION**

### **2.1 CONTENTS OF THE PACKAGE**

- A Explosion-proof telephone
- A Installation manuel
- A use and programmation manuel
- A plastic bag which includes :  
    The sealing stopper for fixation

### **2.2 GENERAL PRESENTATION OF SERIES 229**

Telephone set for Industry, explosion-proof type, for the **IIC** group in zone **II2G** (gas).  
Card based on polycarbonate modified choc / uv, wiht color orange RAL2003.

For type BC/BCA, used in the network, or installation in a network which powered by central battery. Within the limits of power authorized by our sets (see technical characteristics described in the instructions for programming the telephone card.).

Connecter the wire by the press gland in the plug terminal and the earthing terminal.  
**Colse the body of set on gasket with 4 staineless steel.**

### **2.3 GENERAL FEATURE**

- A weatherproof and vandal-resistant loudspeaker (optional, for handsfree)
- A weatherproof and vandal-resistant piezo ringer
- A weatherproof "Electrets" type microphone
- A keypad with simple or double function keys with display
- An on-line LED
- Wall mounting by 2 or 4 points
- Position adjustable handset
- Explosion-proof entrees of cable for cable Ø10 to Ø13mm Maxi.
- Temperature of use : -40 °C / + 60°C

#### **Options :**

- Flashing light card for coming call
- Relay card
- Connection of external loudspeaker
- Personalize of keypad with apron

### **2.4 TYPE OF CABLE**

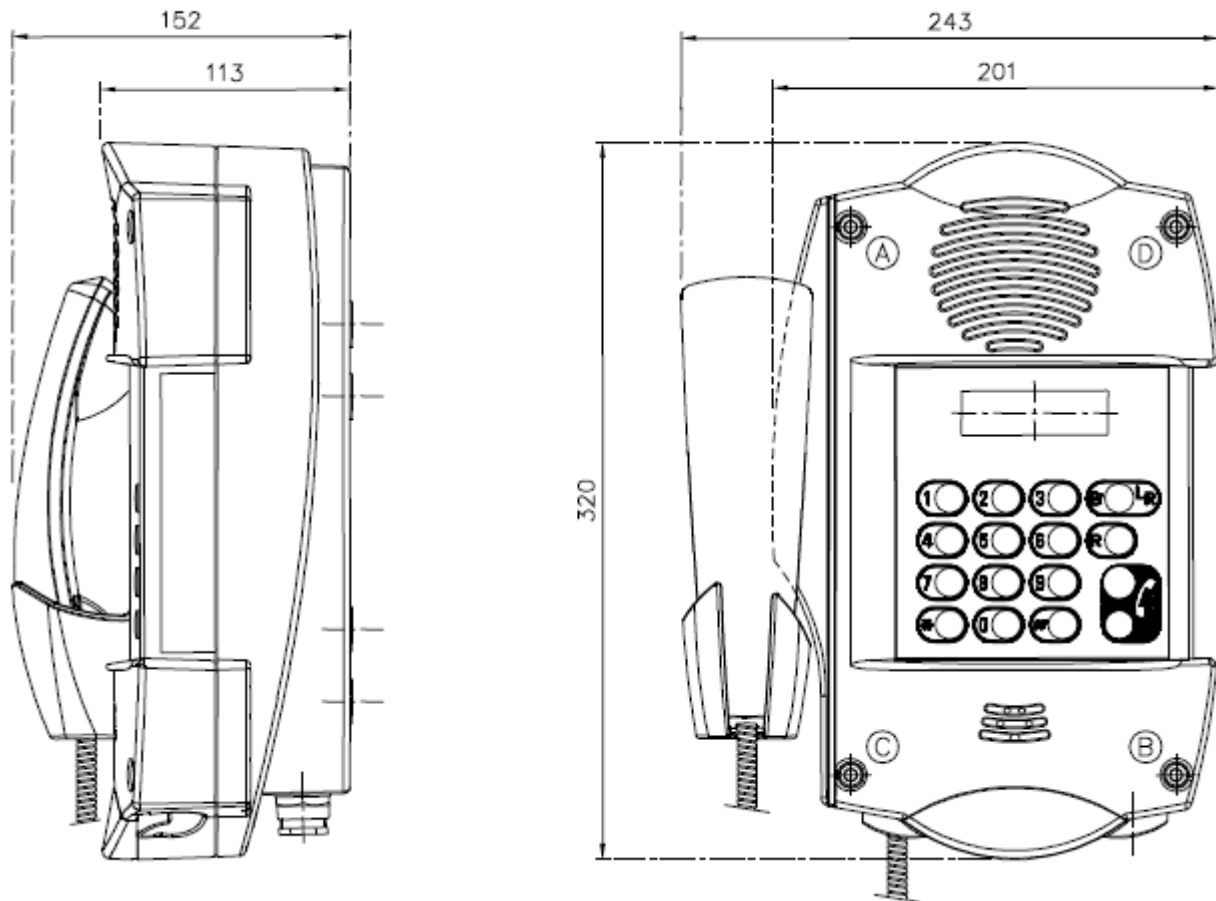
The connection terminals allows the section of mono strand or the milt strand wire maxi 1.5mm<sup>2</sup>.  
Connect the earth on the screw with a husk of section 4 to 6 mm<sup>2</sup> located on the underside of the box.

### 3 DIMENSION OF TELEPHONE SET

#### 3.1 OPEN AND CLOSE OF TELEPHONE SET

In order to access the circuit of set, unscrew the 4 fixation screws in the front face by the order A B C D without with drawing them (captive screws) by the help of tools ALLEN #5, Ref : 10002B5.

In order to close the set, correctly put on 2 sides of the post and tighten the 4 screws in the order of A,B,C,D, without forcing.



#### Note :

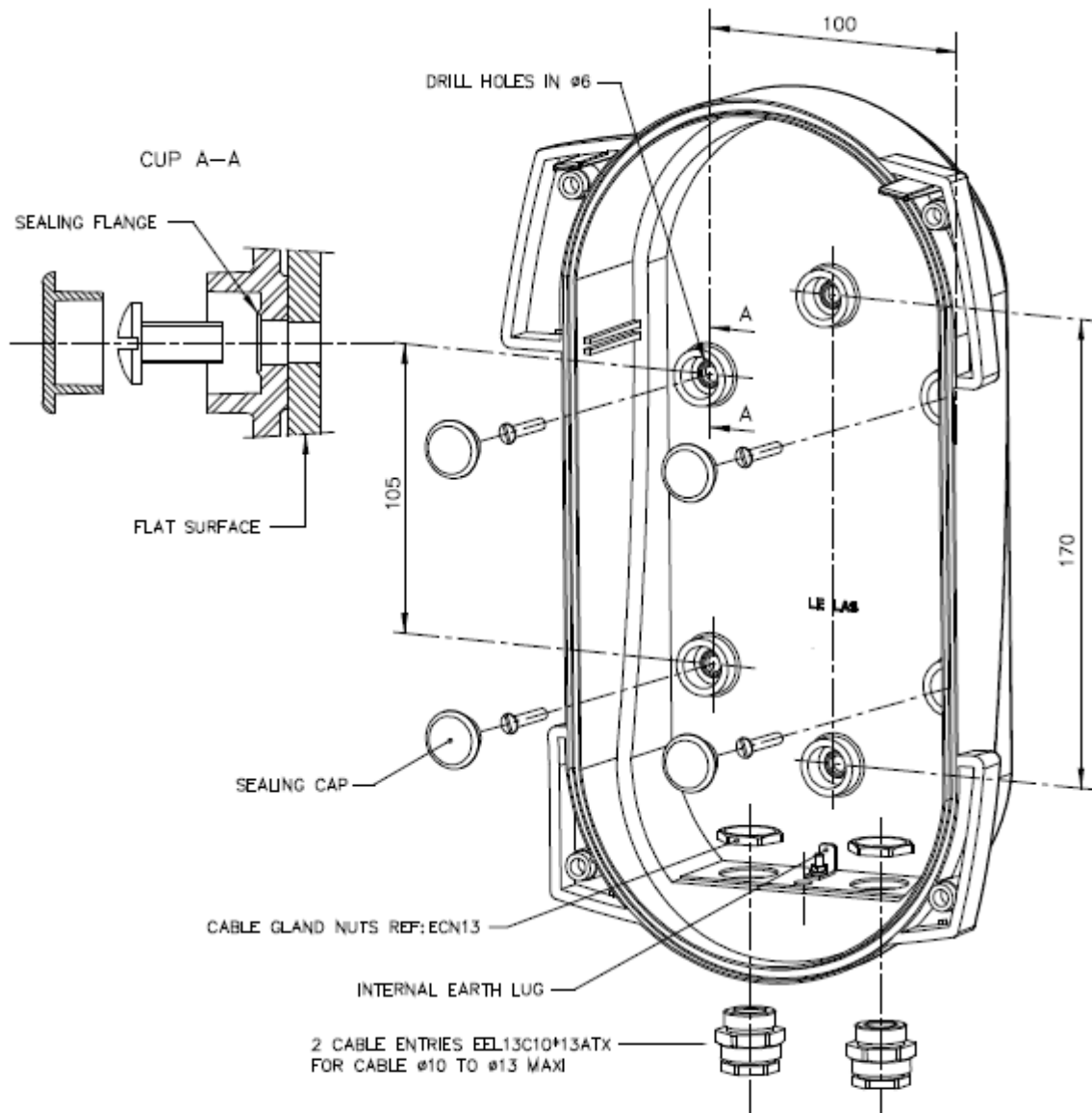
Make sure the proper implementation of sealing of the set when fitting it.  
If you use an electric screwdriver, adjust the in the position middle.

### 3.2 FIXING AND SEALING OF SET

The wall mounting of telephone can be effected by 2 points (vertical axis 170mm) or 4 points (105x100mm). The diameter of the drilled hole depends on the employee screw. ( Ø6 max ) and must choose accordingly depending on the type of material of support (steel, wood, concrete plaster, etc ..).

Drilling a correct locations with the help of a drill Ø6.

**It is imperative to mount plugs sealed in locations containing the screws.**



Tailoring the diameters of cables with diameters of knockouts (Ø10 to Ø13 Maxi) and tighten them correctly.

\* Screws not included, preferably use stainless steel screws.

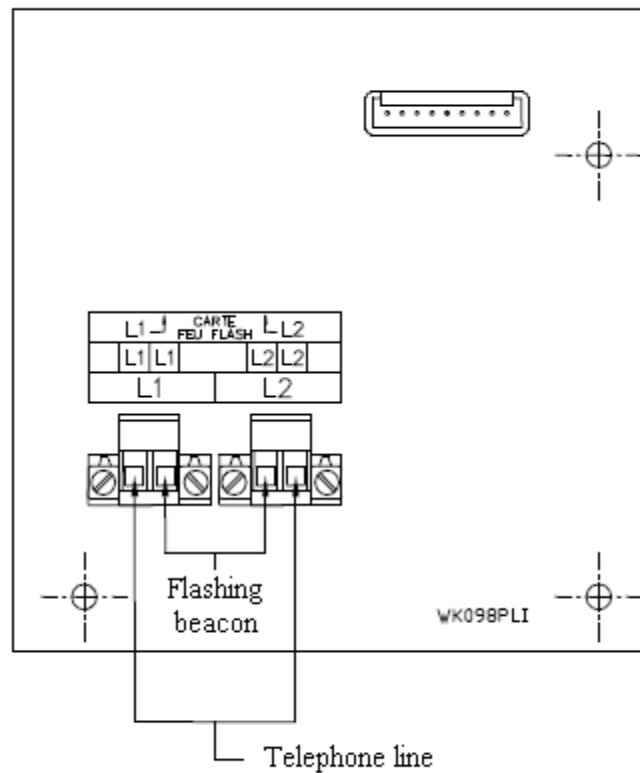


### 3.3 CONNECTION OF THE TELEPHONE LINE

Connection of the telephone to the line is carried out on the intrinsic safety card WK098PLIATX via the connector which can be embedded and lockable.

The terminals accept son of a single or multi-section 1.5mm<sup>2</sup> max

- Connect the line to terminals L1 and L2 which are doubled to connect extensions.



### 3.4 EARTHING THE TELEPHONE

Electrical earthing is carried out externally via the earth screw (situated on the lower part of the case) referenced by the sign ⊥.

Do not forget to reconnect the ground wire of yellow / green from the front on the ground lug located inside the box at the cable entries.

## 4 GENERAL DESCRIPTION

### 229 KEYPAD / HANDS FREE MODEL WITH HANDSET and FLASHING BEACON



### SPARE PARTS LIST

- |   |                      |
|---|----------------------|
| • Piezo siren on TLA/TLC version          | Ref : MT229A1A       |
| • Loudspeaker on TLS version              | Ref : CE124V11       |
| • Keypad card with 14 buttons             | Ref : WK114CLA       |
| • Keypad card with 15 buttons + display   | Ref : WK163CLAF      |
| • Keypad card with 1 / 2 buttons          | Ref : WK114CLA1      |
| • Ex cable entries for cable Ø10 to 13 mm | Ref : EEL13C10*13ATX |
| • Handset                                 | Ref : MS436A17G68    |
| • telephone card Pulse/Tone               | Ref : WK205CMAATX    |
| • Intrinsic safety card                   | Ref : WK098PLIATX    |
| • Electric micro                          | Ref : CE515V2        |
| • Flashing beacon                         | Ref : WK025FLDATX    |



**INERIS**

- (2) **Equipment and protective systems intended for use in potentially explosive atmospheres  
Directive 94/9/EC**

(1) **EC-TYPE EXAMINATION CERTIFICATE**

- (3) Number of the EC type examination certificate: **INERIS 09ATEX0074**

- (4) Equipment or protective system:

**TELEPHONE TYPE 229A1**

- (5) Manufacturer: **LE LAS**

- (6) Address: **34-36, rue Roger Salengro  
F-94134 FONTENAY-SOUS-BOIS**

- (7) This equipment or protective system and any other acceptable alternative of this one are described in the annex of this certificate and the descriptive documents quoted in this annex.

- (8) INERIS, notified body and identified under number 0080, in accordance with article 9 of Council Directive 94/9/EC of the 23<sup>rd</sup> March 1994, certifies that this equipment or protective system fulfils the Essential of Health and Safety Requirements relating to the design and construction of equipment and protective systems intended for use in potentially explosive atmospheres, described in annex II of the Directive.

The examinations and the tests are consigned in report No 022705/10 .

- (9) The respect of the Essential Health and Safety Requirements is ensured by:

- conformity with:

EN 60079-0 : 2006  
EN 60079-7 : 2007  
EN 60079-11 : 2007  
EN 60079-18 : 2004/AC:2006

- specific solutions adopted by the manufacturer to meet the Essential Health and Safety Requirements described in the descriptive documents.