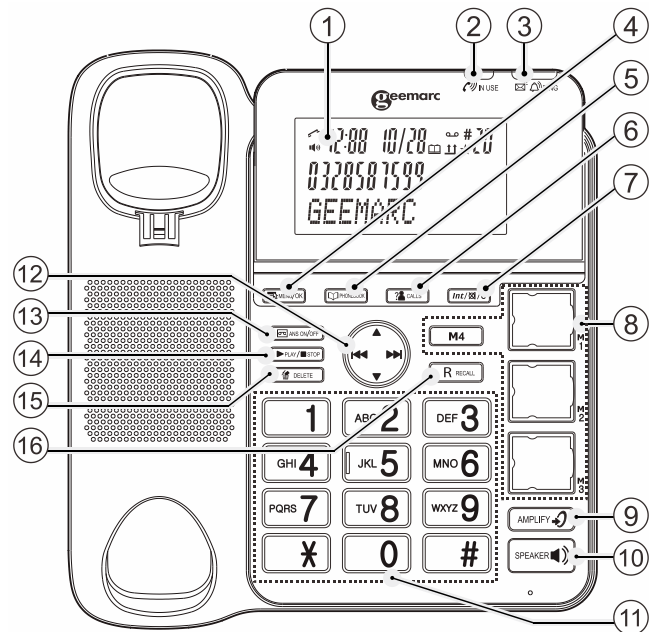


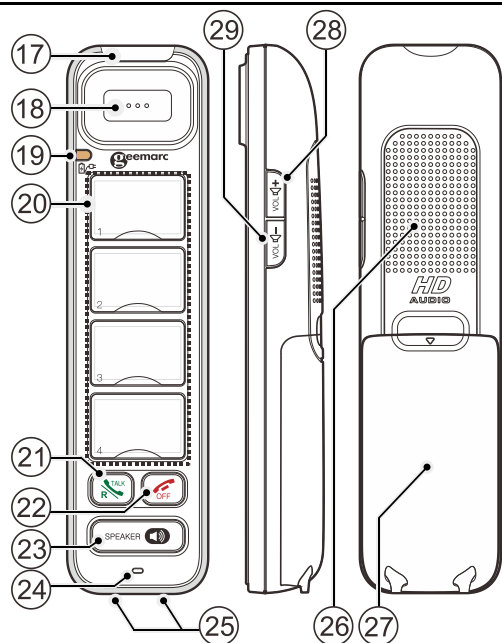
QUICK USER GUIDE

En

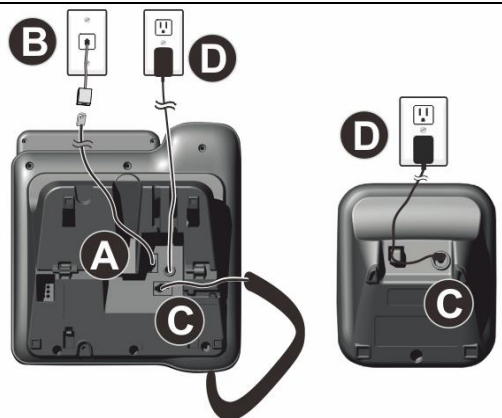
Base



Handset

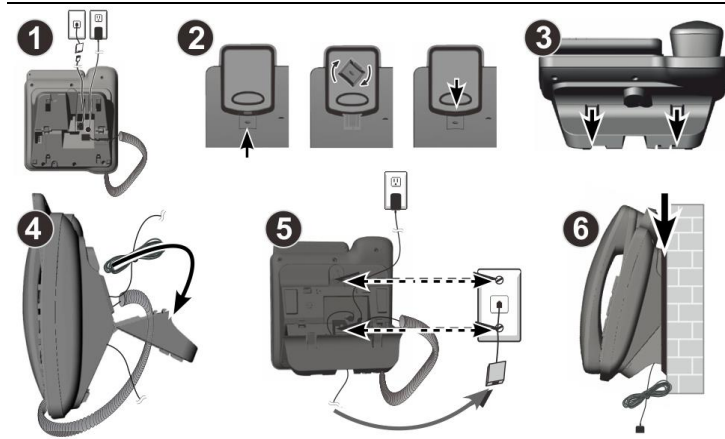


Connection

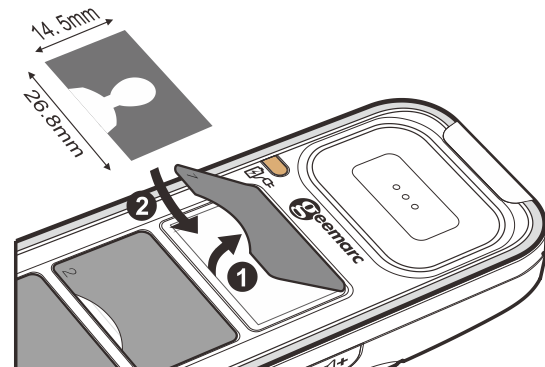


1

Wall Mounting



Insert Photos for speed dial keys



!!! Please refer to our website: www.geemarc.com for an up to date user guide, as there may be important updates and changes you need to be aware of !!!

Congratulations on purchasing your Geemarc AMPLIDECT COMBI-PHOTO 295 telephone. This telephone offers all the advantages of cordless technology (compliant with Digitally Enhanced Cordless Telecommunications-DECT standard) together with an easy to see big button keypad, ideal for those who suffer with poor sight. This telephone is also hearing aid compatible.

It is important that you read the instructions below in order to use your Geemarc telephone to its full potential.

PACKAGE CONTENTS

1 Telephone base, 1 Corded handset, 1 cordless Handset, 2 power adapter, 1 Charger, 1 Telephone line cord, 1 NiMh battery pack, 1 Quick user guide.

INSTALLATION

Connecting the telephone

Connect the telephone cable to the telephone line socket (A) and to the telephone wall socket (B).

Connect the handset curly cord to the base.

Connect the power adapter jack to base and charger (C) then connect the power adapter plug in mains power (D).

Note: Use only the power adapters supplied with the phone.

Connecting the battery

Plug the battery connector securely into the socket inside the handset battery compartment.

Insert the supplied battery as indicated.

Align the cover flat against the battery compartment, and then slide it upwards until it clicks into place.

2

Charging the batteries

Charge the batteries for at least 16 hours when charging for the first time.

OVERVIEW

Base

1- LCD DISPLAY

2- IN USE (): On during a call.

3- RING light ()

Flashes when there is an incoming call.

Steadily on when the answering machine is turned on. Flashes when there are new memos or messages in the answering machine.

4- MENU/OK ()

In idle mode: Press to access the main menu.

In sub-menu mode: Press to confirm the selection.

In Redial list/Call list: Press to store the number into Phonebook.

5- PHONEBOOK ()

In Idle: Press to access the phonebook.

6- CALLS (CALL LIST) ()

In Idle mode: Press to access the call list.

7- INT/MUTE/CLEAR (Int/ /C)

In main menu mode: Press to go back to idle screen.

In sub-menu mode: Press to go back to previous level.

In editing / predialing mode: Press to clear a character / digit.

In editing / predialing mode: Press and hold to delete all the character / digits

During a call: Press to mute / unmute the microphone.

In ringing: Press to silence the base ringer.

In idle mode: Press to intercom another system handset.

8- MEMORY KEYS

(3 PHOTO SPEED DIAL KEYS; 1 MEMORY KEY - M4)

In idle mode: Dial your phone number and press and hold the memory key until to hear a beep.

To use: Press to dial out to the number stored in the memory key.

9- VOLUME BOOST ()

During a call: Press to activate/deactivate the VOLUME BOOST function.

10- SPEAKER ()

In Idle mode or Phonebook/ Call list/ Redial list view mode: Press to make a call with speakerphone.

11- ALPHANUMERIC KEYPAD, STAR (*), HASH (#)

In predial or editing mode: Press to insert a digit.

0 key in predial or editing mode: Press and hold to insert a pause.

12- NAVIGATION KEYS

UP ()

In menu mode: Press to scroll up the menu items.

In Phonebook list / Redial list / Call list: Press to scroll up the list.

In editing mode: Press to move the cursor one character to the left.

During a call or TAM message playback: Press to increase the volume.

REPEAT/OGM ()

In Idle mode: Press and hold to record OGM.

3

Press to playback OGM.

In TAM message playback mode: Press to go back to previous message.

MEMO/SKIP FORWARD ()

In Idle mode: Press and hold to record a memo.

In TAM message playback mode: Press to skip to next message.

DOWN/REDIAL LIST ()

In idle mode: Press to access the redial list.

In menu mode: Press to scroll down the menu items.

In Phonebook list / Redial list / Call list view mode: Press to scroll down the list.

In editing mode: Press to move the cursor one character to the right.

During a call or TAM message playback: Press to decrease the volume.

13-ANS ON/OFF ()

In Idle: Press to switch the answering machine ON or OFF.

14. PLAY/STOP ()

In idle mode: Press to playback messages.

During TAM message playback: Press to stop playing messages.

15. DELETE ()

In TAM message playback mode: Press to delete the current TAM message playback.

In idle mode: Press and hold to delete all old messages.

16. RECALL ()

During a call: Press to activate Recall for use with Telephone Network Services such as Call Waiting during a call.

During message playback: Press to call back the caller if the caller's number is available

Handset

17. Incoming Call light

Flashes red slowly when receiving an incoming call.

18. Earpiece

19. Charger/Booster LED ()

- Steady red when the handset battery is charging.

- Long flashes in red when the handset battery is low.

- Flashes red quickly when handset registration is in progress.

- Flashes red slowly when the handset is not registered or not in charger.

- Steady blue when the booster function is activated.

20. Photo speed dial keys

Your handset has four photo speed dial keys. It retrieves the same set of photo or Direct Memory speed dial entries stored in the AMPLIDECT295 or AMPLIDECT COMBI 295.

Press to dial a preset number.

21. Talk ON / Flash ()

- Make or answer a call.

- Light Green when the handset is on earpiece mode.

- During a call, Press to access Recall feature (R).

22. TALK OFF ()

- Hang up a call.

- Silence the ringer temporarily while the phone is ringing.

- Mute the paging tone.

23. SPEAKER ()

- Make or answer a call using the speakerphone.

- Switch between the speakerphone and the earpiece.

- Light Orange when on speakerphone mode.

4

- 24. Microphone
- 25. Charging pole
- 26. Speakerphone
- 27. Battery compartment cover

28. VOL+ (VOL +)

- Increase the listening volume up to 30dB amplification, (Or the ringer Volume when in quiescent mode).
- Switch On/Off the receiver Booster function (LED blue).

29. VOL- (VOL -)

- Decrease the listening volume. (Or the ringer volume when in quiescent mode (until ringer turn OFF)).

MENU SETTING

The phone settings are always set in the same manner:

Base: Press **Menu/OK** button to open the main menu. Then use the **▼▲** buttons to select an entry and confirm it by pressing the **Menu/OK** button.

The factory preset **PIN** code is **0000**

Example:

Set the language on the base

Press **MENU / OK** , then use **▼▲** to select **LANGUAGE**, press **MENU / OK** , then use **▼▲** to select the desired language and then press **MENU / OK** to confirm.

Base

PHONEBOOK

►VIEW►ADD►EDIT►DELETE►DELETE ALL►PB STATUS

CALL LOG: ►MISSED ►RECEIVED ►DIALLED

DATE & TIME: ►TIME FORMAT ►SET CLOCK

LANGUAGE

►ENGLISH ►DEUTSCH ►FRANÇAIS ►ITALIANO
►NEDERLANDS...

SETTINGS

►RING SETUP ►DELETE HS ►DIAL MODE ►FLASH TIME
►KEY TONE ►CHANGE PIN ►BS DEFAULT

PAGE ALL HS

REGISTRATION

ANS. MACHINE

►MSG PLAYBACK ►DELETE ALL ►MEMO ►TAM ON/OFF
►TAM SETTINGS (ANSWER MODE, OGM SETTINGS,
ANSWER DELAY, RECORD TIME, TAM LANGUAGE, BS
SCREENING, REMOTE ACC, COMPRESSION, CHANGE PIN,
TAM DEFAULT)

USING THE HANDSET

Booster mode

During a call, when in boost mode, you can increase the listening volume up to 30dB amplification.

- Press and Hold (2 seconds) the VOL+ button to activate Boost mode (LED will be steady blue).
- Press and hold again the VOL+ button to cancel Boost mode. (LED will go Off).

Storing a number to a picture memory button

On the base:

In predial mode: Press and hold the picture memory button to store the number entered from idle mode. You will hear a beep of confirmation.

Using a picture memory

Press and hold the memory button, the handset dials the memory number and the handset is in speakerphone mode.

REGISTRATION & DE-REGISTRATION

Note: Handset and base station are pre-registered.

Up to five handsets can be registered to a single base station. In the case of re-registration, the PIN code is **0000**.

Registration a photo handset

Base: First place the base of the AMPLIDECT295 or AMPLIDECT COMBI 295 in Registration mode.

Replace photo handset back on the charging pod, the red LED flashes quickly to indicate registration in process.

You will hear a confirmation beep when the registration process completes. It takes up to 60 seconds to complete the registration.

Note: if the handset doesn't arrive un registered, please follow this procedure:

Handset: Quickly press **[VOL+] [SPK] [VOL-] [SPK] [VOL+] [VOL-] [SPK]** in idle mode, then HS will have a "Bi,Bi" tone.

Registration a standard handset

On Handset: Press **MENU/OK** select **▼▲** REGISTRATION, Press **MENU/OK** select **▼▲**BASE(1-4), Press **MENU/OK** enter PIN.

At the same time on **Base:** Press **MENU/OK** , select **▼▲** REGISTRATION, press **MENU/OK** to see PLEASE WAIT (If the registration is successful, there will be a confirmation beep).

De-Registration

On Base: Press **MENU/OK** , use **▼▲** to select **SETTINGS**, press **MENU/OK** .

Use **▼▲** to select **DELETE HS**, press **MENU/OK** enter PIN, press **MENU/OK** .

Use **▼▲** to select one of the handsets that you want to de-register, press **MENU/ OK** to confirm.

INTERCOM

Internal Call

Base: Press **INT/☒/CLEAR (Int/☒/☒/C)**, use **▼▲** to select **HS 1 - 5**, press **MENU /OK** to connect.

Handset: Function not available.

Call All Handsets

Base: Press **INT/☒/CLEAR (Int/☒/☒/C)**, use **▼▲** to select **ALL HANDSETS**, press **MENU /OK** to connect.

Transfer an External Call

Base: Press **MENU /OK** , select **▼▲** handset number, press or on handset. After connection quit the call on base.

Conference Call

Base: Press **MENU / OK** ,

Enter the desired handset number on keypad.

After connection press and hold until CONFERENCE is shown.

ANSWERING MACHINE

Your telephone base includes a telephone answering machine that records unanswered calls when it is on. The answering machine can store up to 59 messages within the maximum recording time of approximately 15 minutes. As well as recording incoming messages, you can record memos for other users of your phone.

Press **ANS ON/OFF** to switch the answering machine ON or OFF

Remote operations

If you are away from your home, you can call your answering machine to switch on or off the answering machine and listen to your messages remotely using another tone-dialing phone.

1. Place a call from a tone-dialing phone.
2. When the answering machine answers the call and starts playing OGM, press .
3. Enter the 4-digit Remote Access PIN (default PIN is **0000**).
4. Press the following keys to carry out your desired function.

A	Functions	
	While message is not playing	While message is playing
2		Delete the current message playback
4		Repeat playing the current message from the beginning. Press twice to skip backward to the previous message.
5	Play the message	
6		Skip forward to play the next message
7	Turn on the answering machine	
8		Stop the current message playback
9	Turn off the answering machine	
*	Enter the 4-digit remote access PIN	

NOTE:

When your answering machine memory is full and the answer mode is in ANS & RECORD, the answer mode will change to ANSWER ONLY automatically.

It will change to ANS & RECORD mode automatically after some messages have been deleted.

You cannot delete new messages before they are listened.

MAINTENANCE

Clean the surface of the housing with a soft, fluff-free cloth. Do not use any cleaning agents or solvents.

GUARANTEE

From the moment your Geemarc product is purchased, Geemarc guarantee it for the period of two years. During this time, all repairs or replacements (at our discretion) are free of charge. Should you experience a problem then contact our help line or visit our website at www.geemarc.com.

The guarantee does not cover accidents, negligence or breakages to any parts. The product must not be tampered with or taken apart by anyone who is not an authorized Geemarc representative.

The Geemarc guarantee in no way limits your legal rights.

IMPORTANT : YOUR RECEIPT IS PART OF YOUR GUARANTEE AND MUST BE RETAINED AND PRODUCED IN THE EVENT OF A WARRANTY CLAIM.

Please note: The guarantee applies to the United Kingdom only.

DECLARATIONS:

CE Directives

Geemarc Telecom SA hereby declares that this product is in compliance with the essential requirements and other relevant provisions of the Radio and Telecommunications Terminal Equipment Directive 2014/53/UE.

The CE declaration of conformity may be consulted at www.geemarc.com

Electrical connection:

The apparatus is designed to operate from a 230V 50Hz supply only. (Classified as hazardous voltage according to EN60950 standard). The apparatus does not incorporate an integral power on/off switch. To switch off the apparatus, disconnect the power adaptor.

When installing the apparatus, ensure that the mains power socket is readily accessible.

Telephone connection:

Voltages present on the telecommunication network are classified TNV-3 (Telecommunication Network Voltage) according to the EN60950 standard.

Recycling Directives

The WEEE (Waste Electrical and Electronic Equipment) has been put in place for the products at the end of their useful life are recycled in the best way.

When this product is finished with, please do not put it in your domestic waste bin. Please use one of the following disposal options:

- Remove the batteries and deposit them in an appropriate WEEE skip.

Deposit the product in an appropriate WEEE skip.

- Or, hand the old product to the retailer. If you purchase a new one, they should accept it.

Thus if you respect these instructions you ensure human health and environmental protection.



For product support and help visit our website at

www.geemarc.com

United Kingdom: 5B Swallow Court, Swallowfields, Welwyn Garden City, Hertfordshire, AL7 1SB, UK

telephone **01707 387602**

fax **01707 832529**