

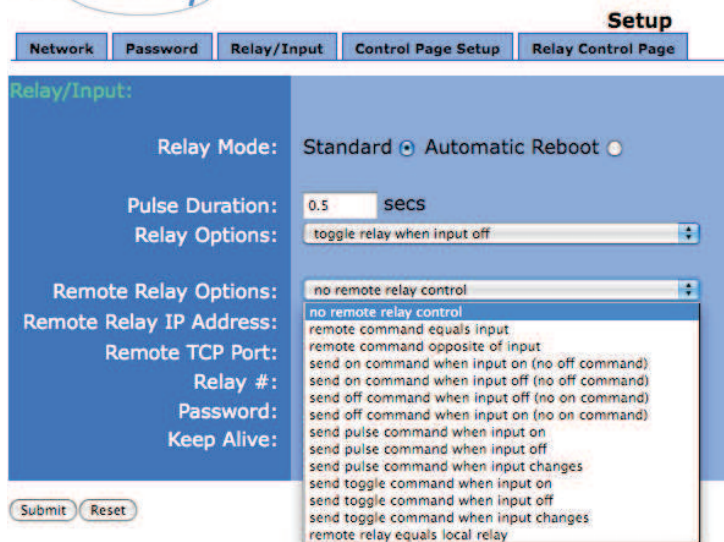


WebRelay™ provides reliable remote relay control and discrete signal monitoring over any IP network. WebRelay™ can be used in countless applications, including pump and motor control, security lock systems, remote reboot, and lighting control. WebRelay's powerful and flexible design make imagination its only limit.

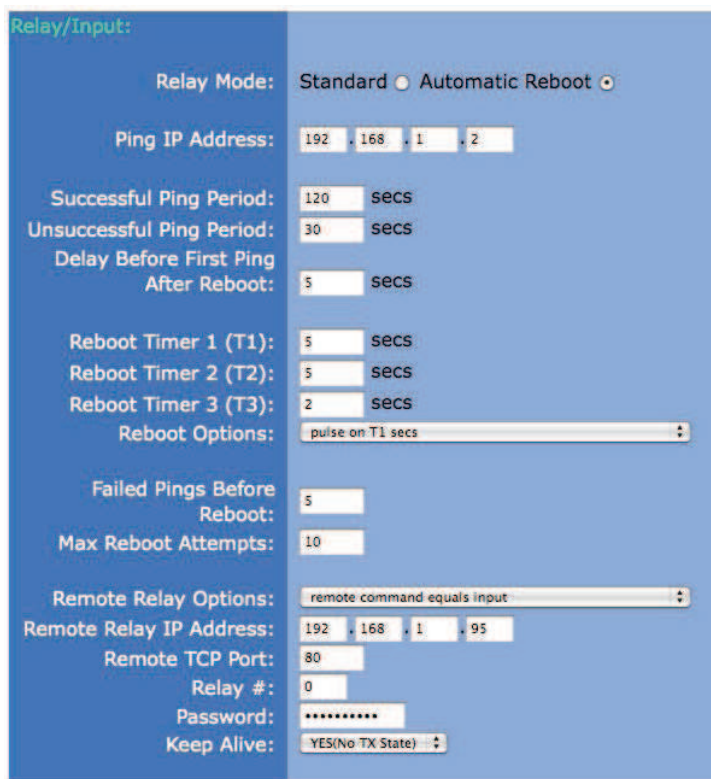
In addition to its built-in relay, WebRelay™ has an optically isolated input that can be used to monitor the state of devices, control the relay, or control a remote relay somewhere else on the network. This feature is useful to extend the output of a PLC to another building or to allow a switch or sensor to control a device at a distant location.

Features :

- No programming required.
- Full control using a standard web browser or text-based XML messages.
- Can operate as a Modbus/TCP slave.
- Password protected.
- 12-Amp relay contacts.
- On/Off and Pulse modes.
- Optically isolated input can be used for:
 - Monitoring
 - Relay control
 - Remote relay control (Peer to Peer)
- Automatic Reboot controller mode for remote reboot of computers and network devices.
- Selectable TCP ports.
- Two removable terminal connectors included.
- Rugged DIN-Rail/wall mountable enclosure.
- Three power supply options available:
 - 5 VDC
 - 9-28 VDC
 - Power-Over-Ethernet (802.3af)

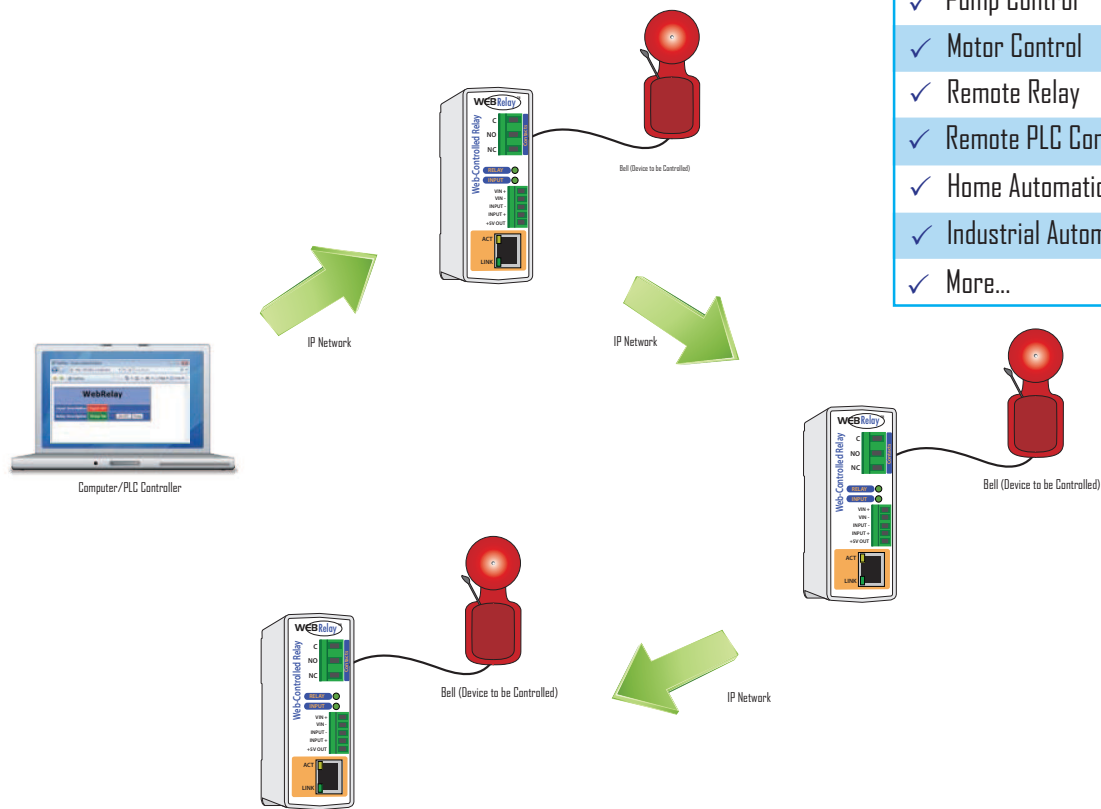


Drop-down List for Controlling Remote Relays



Automatic Reboot Options

Daisy Chained Control



Additional Applications:

- ✓ Remote Reboot
- ✓ Pump Control
- ✓ Motor Control
- ✓ Remote Relay
- ✓ Remote PLC Control
- ✓ Home Automation
- ✓ Industrial Automation
- ✓ More...

Power Requirements:

Model X-WR-IR12-I15-5
Voltage: 5VDC ± 5%
Current: 166mA - 465mA*

Model X-WR-IR12-I15-1 and X-WR-IR12-I124-1
Voltage: 9-28VDC
Current: 38mA - 313mA*

*Current based upon voltage applied and device settings.
See users manual for complete breakdown.

Model X-WR-IR12-I15-E
Power Over Ethernet Option: POE Class I
(0.44 to 3.84 Watts)

I/O: 1 Optically Isolated Input, 1 Relay Output

Relay Contacts:

Contact Form: SPDT (Form C)
Contact Material: AgSnO2
Max Voltage: 240VAC, 100VDC
Max Current: 12A
Relay Control Options: ON/OFF or Pulsed
Pulse Timer Duration: 100ms to 86400 Seconds (1 day)
Accuracy of pulse timer: 99.99%

Optically Isolated Input:

Input Voltage: (5V Input models)
 V_{High} : 3-12VDC
 V_{Low} : 0-1VDC
Input Current: 4.7mA - 25mA (5V Input models)
Input Voltage: (24V Input models)
 V_{High} : 11-28VDC
 V_{Low} : 0-1VDC
Input Current: 4.9mA - 13.4mA (24V Input models)
Input Isolation: 1500V
Input Functions: Monitor, Local Relay Control, Remote Relay Control
Input to Local Relay Settings: Equal, Invert, Toggle, Latch, Pulse, none
Input to Remote Relay Settings: Equal, Invert, Toggle, Latch, Pulse, None

Network:

10/100 Base-T Ethernet

Network Setup:

Static IP address assignment, HTTP port selectable

Connectors:

Power/Input: 5-position, removable terminal strip, 3.81mm terminal spacing
Relay: 3-position, removable terminal strip, 7.62mm terminal spacing
Network: 8-pin RJ-45 socket

LED Indicators: 4

- Input
- Relay Coil Energized
- Network Linked
- Network Activity

Physical:

Operating Temperature: -40°C to 65.5°C (-40°F to 150°F)
Size: 1.4in (35.7mm) wide
3.88in (98.5mm) tall
3.1in (78.0mm) deep
Weight: 5oz (142 grams)
Enclosure Material: Lexan 940 (UL94 V0 flame rated)

Password Settings:

Password protection on setup page: Yes
Password protection on control page: Optional
Password Encoding: Base 64
Max password length: 10 characters

Regulatory Compliance:

Electromagnetic Compliance:
IEC CISPR 22, CISPR 24
FCC 47CFR15 (-1 and -5 Models class B, POE Model Class A)
EU EN55024, EN55022
Product Safety:
IEC 60950-1 / EN 60950-1

PRODUCT	WebRelay™	X-301 WebRelay-Dual™	WebRelay-Quad™	X-310	X-332	WebRelay-IO™	WebRelay-IO Plus™	5-Input Module	Temperature Module™
FEATURE									
Relays	1 Relay 240V AC, 12A	2 Relays 28V, 3A	4 Relays 28V, 1A	4 Relays 28V, 1A	16 Relays 30V, 2A	10 Relays 240V AC, 30A	10 Relays 240V AC, 30A	-	2 Relays 28V, 3A
Inputs	1 Isolated Input	2 Isolated Inputs	-	4 Discrete Inputs	16 Isolated Inputs	-	2 Discrete Inputs	5 Isolated Inputs	-
Temperature Monitoring	-	-	-	■	■	-	■	-	■
Humidity Monitoring*	-	-	-	■	■	-	■	-	-
Real-Time Clock	-	■	-	■	■	-	■	-	-
Scheduling	-	■	-	■	■	-	■	-	-
Logging	-	■	-	■	■	-	■	-	-
Email Notifications	-	■	-	■	■	-	■	■	■
Automatic Reboot	■	-	-	-	-	-	-	-	-
Input Counters	-	2 Counters	-	2 Counters	2 Counters	-	2 Counters	5 Counters	-
Remote Relays Supported	1 Remote Relay	2 Remote Relays	-	16 Remote Relays	16 Remote Relays	-	-	5 Remote Relays	-
Supported Scripts	-	Supports BASIC scripts	-	Supports BASIC scripts	Supports BASIC scripts	Supports BASIC scripts	Supports BASIC scripts	-	-
Supported Protocols									
HTTP	■	■	■	■	■	■	■	■	■
Modbus	■	■	■	■	■	■	■	■	■
SNMP	-	■	-	■	■	■	■	-	-
SMTP	-	■	-	■	■	■	■	■	■
Remote Services	-	■	-	■	■	■	■	-	-
Enclosure	DIN Rail or Wall-Mount	DIN Rail or Wall-Mount	DIN Rail or Wall-Mount	DIN Rail or Wall-Mount	DIN Rail Wall-Mount Shelf Mount	DIN Rail	DIN Rail	DIN Rail or Wall-Mount	DIN Rail or Wall-Mount
Power Supply Options	9-28 VDC, PDE/5VDC	9-28 VDC	9-28 VDC, POE	9-28 VDC, POE/5VDC	9-28 VDC, POE/5VDC	10-36 VDC	10-36 VDC	5 VDC, 9-28 VDC, POE	5 VDC, 9-28 VDC, POE

* Humidity sensors are optional

PRODUCT	X-300™	Analog Module™	X-320™	X-320M	WebSwitch	WebSwitch Plus	X-600M	X-115	X-125
FEATURE									
Relays	3 Relays 28V, 3A	-	2 user-selectable Discrete I/Os	2 user-selectable Discrete I/Os	2 AC Outlets 120 or 240 V	2 AC Outlets 120 or 240 V	-	2 Relays 277VAC, 110VDC, 20A	8 Relays 125VAC, 30VDC, 2.5A
Inputs	-	8 Analog Inputs	4 Analog Inputs 1 Frequency Input	4 Analog Inputs 1 Frequency Input	-	2 Discrete Inputs	-	-	-
Temperature Monitoring*	■	-	■	■	-	■	■	-	-
Humidity Monitoring*	■	-	■	■	-	■	■	-	-
Real-Time Clock	■	-	■	■	-	■	■	See X-600M	See X-600M
Scheduling	■	-	■	-	-	■	■	See X-600M	See X-600M
Logging	■	-	■	■	-	■	■	See X-600M	See X-600M
Email Notifications	■	■	■	■	-	■	■	See X-600M	See X-600M
Automatic Reboot	-	-	-	-	■	■	■	See X-600M	See X-600M
Input Counters	-	-	■	■	-	-	-	-	-
Remote Relays Supported	3 Remote Relays	4 Remote Relays	3 Remote Relays	2 Remote Relays	-	-	Up to 1,024 I/O points	See X-600M	See X-600M
Supported Scripts	Supports BASIC scripts	-	Supports BASIC scripts	-	-	Supports BASIC scripts	Supports Lua scripts	Supports Lua scripts	Supports Lua scripts
Supported Protocols									
HTTP	■	■	■	■	■	■	■	See X-600M	See X-600M
Modbus	■	■	■	■	■	■	■	See X-600M	See X-600M
SNMP	■	-	■	■	■	■	■	See X-600M	See X-600M
SMTP	■	■	■	■	-	■	■	See X-600M	See X-600M
Remote Services	■	-	■	■	■	■	■	See X-600M	See X-600M
Enclosure	DIN Rail or Wall-Mount	DIN Rail or Wall-Mount	DIN Rail or Wall-Mount	DIN Rail or Wall-Mount	Rack Mount Wall-Mount Shelf Mount	Rack Mount Wall-Mount Shelf Mount	Rack Mount Wall-Mount Shelf Mount	Rack Mount Wall-Mount Shelf Mount	Rack Mount Wall-Mount Shelf Mount
Power Supply Options	9-28 VDC, PDE/5VDC	9-28 VDC	9-28 VDC	9-28 VDC	100-240 VAC	100-240 VAC	9-28VDC	Powered via expansion bus from X-600M	Powered via expansion bus from X-600M

* Humidity sensors are optional.

PRODUCT	X-13s	X-15s	X-16s						
FEATURE									
Relays	-	-	-						
Inputs	-	8 Digital Inputs	8 Analog Inputs						
Temperature Monitoring	2 Thermocouple Type-K	-	-						
Humidity Monitoring	2 Thermocouple Type-K	-	-						
Real-Time Clock	See X-600M	See X-600M	See X-600M						
Scheduling	See X-600M	See X-600M	See X-600M						
Logging	See X-600M	See X-600M	See X-600M						
Email Notifications	See X-600M	See X-600M	See X-600M						
Automatic Reboot	See X-600M	See X-600M	See X-600M						
Input Counters	-	8 Counters	-						
Remote Relays Supported	See X-600M	See X-600M	See X-600M						
Supported Scripts	Supports Lua scripts	Supports Lua scripts	Supports Lua scripts						
Supported Protocols									
HTTP	See X-600M	See X-600M	See X-600M						
Modbus	See X-600M	See X-600M	See X-600M						
SNMP	See X-600M	See X-600M	See X-600M						
SMTP	See X-600M	See X-600M	See X-600M						
Remote Services	See X-600M	See X-600M	See X-600M						
Enclosure	Rack Mount Wall-Mount Shelf Mount	Rack Mount Wall-Mount Shelf Mount	Rack Mount Wall-Mount Shelf Mount						
Power Supply Options	Powered via expansion bus from X-600M	Powered via expansion bus from X-600M	Powered via expansion bus from X-600M						