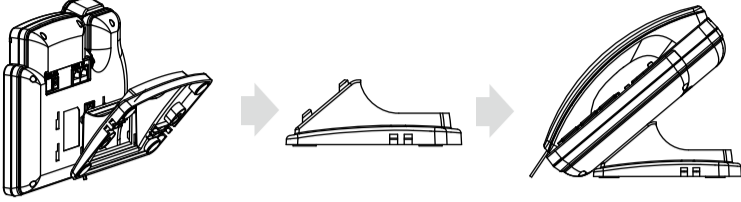
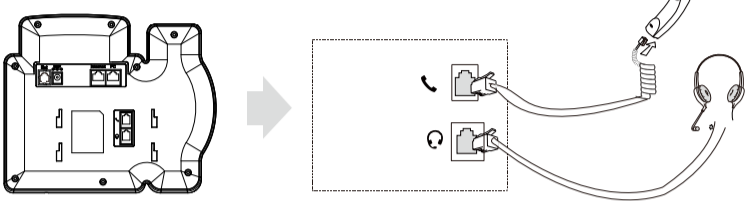


## Basic Setup

**Mounting:** Slide the short edges of the L-shaped stand (the prongs) into the phone's two rear slots (see below). Slide the prongs in until they are locked.

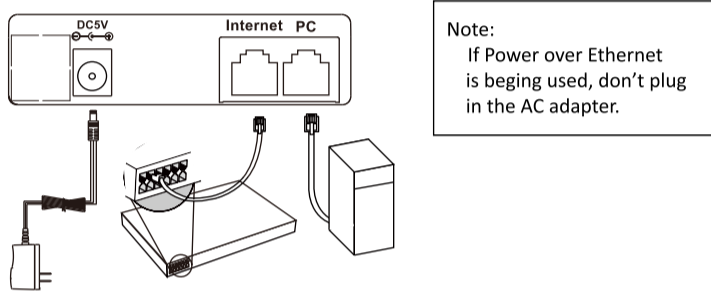


Connect the handset and optional headset as shown below:



## Connect Network Cable and Power

You can either connect the IP-Phone to the power adapter directly or a PoE (Power over Ethernet) compliant switch or hub. The IP-phone can also share the network connection with other network devices by using PC port. Connection is shown below:



## Configuration

1. After setting up the network and power, connect IP phone to your computer, then press menu softkey then select Status then check the IP address in the main menu. (If you are using DHCP to obtain IP address)
2. Launch web browser and type in the IP address to access web interface. Login with username and passwords(admin by default).
3. Register the device using your SIP account. (Please refer to user manual for more information)

## Operation

### Make a call

- Pick up the handset, enter a phone number then press the softkey or # key to make a call.
- Press RF key to initiate a call in the phone.

### Redial

Press the Redial key , select a dialed number then press the softkey .

### Receive a call

- During a call: Press softkey to accept a second call or press softkey to reject it.
- Idle state: 1. Pick up the handset 2. Press softkey 3. Press Handfree key

### Mute a call

Press the mute key ; To resume the conversation, press the mute key again.

### Hold a call

Press softkey to hold the current conversation.

## Special features

1. **SOS key:** Dedicated button for any emergency situations, it can be configured as speed dial to call out pre-configured number. To configure SOS key, go to phone webpage→Phone→Key/Display→Function key.
2. **Memory Key:** To help users contact with their important relatives easily and quickly, three distinct buttons can be configured to save phone number. When there is a need, simply press the button to reach their families. To configure Memory keys, go to phone webpage→Phone→Key/Display→Function key.
3. **RF key:** The RF key is the small size of phone on your hand, base on infrared widget, which enabled multiple features gives user remote control ability to control the phone. To configure RF key, go to phone webpage→Phone→Key/Display→RF key.

## Status Information

Registered		Network disconnection	
Register failed		Ring off	
Registering		Headset mode	
Deactivated account		New voice message	
Forward		New text message	
Auto answer		Missed calls	
Do Not Disturb			

### Notice Information

Information contained in this document is believed to be accurate and reliable at the time of printing. This document is subject to change without notice, any update to this document can be viewed on Akuvox's website: <http://www.akuvox.com> © Copyright 2014 Akuvox Ltd. All rights reserved.



## Unpacking

Please make sure the package contains the following items:

- IP-Phone x 1
- Stand x 1
- Handset with cord x 1
- Ethernet cable x 1
- Quick guide x 1
- Power Adapter x 1 (Optional)

## Product Overview

